



You're at home



*Because trust is a must*

From first homes to family homes on flat blocks or hillside, in new subdivisions or urban regeneration, in fact anything anywhere, you can trust Rossdale Homes to build your dream.



*Because trust is a must*

Rossdale Investments makes investing in property so easy. And our lifetime rental guarantee ensures your future is in safe hands.

**Page XX**



*Because trust is a must*

We have a special team to design, build or develop your multi-dwelling project. From Developers to Retirement villages and special needs and government housing we will help you make your project viable.

**Page XX**



*Because trust is a must*

Rossdale Developments is involved with projects right across South Australia, from residential sub-divisions to apartment complexes.

**Page XX**



*Because trust is a must*

As part of our ongoing support of the Women's and Children's Foundation, Team Kids and Easter Appeal, Rossdale Homes built the Home Lottery prize home.

**Page XX**

# Rossdale Homes. Built on Trust.

**Building a home isn't easy. It takes patience,  
communication and plenty of hard work.**

Here at Rossdale, we've been building award-winning homes for South Australians since 1980.

And 35 years on, we still enjoy nothing more than handing over the keys and bringing smiles to the faces of families.

But it's not just about bricks and mortar. We've been building something else during that time – a rock solid reputation as the builder you can trust. At Rossdale, trust is not simply a word we use in meetings. Trust drives our decision making and underpins our customer service.

It's there in every conversation you'll have with our designers, supervisors and builders. As we believe it should be.

Building a home isn't easy. But at Rossdale, we'll make your building experience as positive, stress-free and rewarding as possible.

And that's a promise.



Giles French  
Managing Director

# The Rossdale family.

**Rossdale Homes is one of South Australia's most respected builders, a proud family company that has been building award winning homes since 1980.**

Rossdale Homes' commitment to value and quality in housing owes much to the dedication and experience of its energetic founders, Craig and Ross Robinson.

In mid 2007, Giles French in conjunction with other local business identities, took over the reins to retain the local ownership focus that has enabled Rossdale Homes to be a South Australian family-owned company. We currently employ more than 70 people locally - with over 400 active subcontractors.

With 30 years of building experience, we are strong supporters of affordable, quality housing. To achieve this, we have listened carefully to customers, worked hard to meet the needs of our clients and developed a tradition of exceptional service which is tailored to individual needs.

While Rossdale Homes have won many awards over the years, the focus remains firmly on providing quality and value in housing

our customers. And nowhere is this more obvious than in the unique 'fixed price guarantee', a price that really is fixed, from a building company that really cares. After signing the contract, you can change the price but we can't.

When Rossdale builds your home, we make sure that you get what you want, without the stress and hassle which can happen.

It's all in the way we work with you.

Rossdale Homes' reputation as the builder you can trust - began with our first ever home, back in 1980.

Since then, a lot has changed - building trends, block sizes and certainly prices. But one thing remains absolute - our relentless commitment to quality.

You'll find it in our fittings and our finish. You'll see it through the work of our tradespeople. And you'll hear it through the words of our supervisors.

From your first consultation through the selection process to the day of handover, you'll see what makes Rossdale Homes unique - our commitment to exceeding your expectations.

## HIA Awards

**2012 Professional Major Builder of the Year**

**2011 Best Display Home** Allenby Villa

**2009 Best Custom Built Home (Platinum)**  
\$500,000-\$700,000

**2008 Professional Major Builder of the Year**  
**Best Custom Home** up to \$200,000  
**Best Project Home** over \$300,000

**2007 Professional Major Builder of the Year**

**2006 Professional Major Builder of the Year**  
**Best Display Home** Ashford

**2005 Professional Major Builder of the Year**  
**Best Display Home** Leabrook

**2004 National Professional**  
**Major Builder of the Year**  
**Professional Major Builder of the Year**  
**Best Display Home** Madison

**2003 Professional Major Builder of the Year**  
**Best Display Home** Riverside  
**Best Display Home** Villa Nova

**2002 Best Display Home** Springfield  
**Best Display Home** Tusmore Loft

**2001 Best Display Home** Toscana

**2000 Best Overall Display Home**  
**Best Display Home** St Vincent

**1999 Best Custom Built Home**

**1998 Best Display Home** Willunga

**1997 Best Display Home** Millswood

**1996 Quality Builder of the Year**





## Helping build better lives for all South Australians.

**At Rossdale Homes we have a dedicated team of professionals who specialise in multi-dwelling construction projects.**

Whether it's as the builder only or as the developer with a full design, town-planning and subdivision service as well as managing civil construction through to marketing and sales, we work with developer companies to bring their projects to life and help achieve the results they are looking for.

Combined with our Investments division, we can offer a marketing outlet with finance and real estate rental management.

We build homes and units for retirement village operators, the not-for-profit community and social housing organisations which includes disability and adaptable housing. We also build homes for the Government's Housing SA (formerly SA Housing Trust) social and special needs - as well as church and community groups with community halls, and even Scout halls.

Our professionals are prepared to respond to tenders and / or design briefs. Our services are very competitively priced and we only charge for the services you receive.

If you are a developer of multi-dwelling projects, why not give us a call and see how we can work with you.



## Turning property owners into entrepreneurs.

**Do you have a parcel of land or access to a property that you think is ripe for development and you might need help to develop it - or you want to sell it?**

Rossdale Homes is a developer of niche land subdivisions and integrated housing developments. We have an in-house team of consultants who have many years experience in land developing with specialised skills in town planning, surveying, real estate sales and financial modelling.

We have access to a group of investors who can help fund the purchase of land or work with property owners in joint venture arrangements to develop their projects - which provide a profitable return for everyone involved.

Rossdale's strong financial credentials and in-house management skills means we have access to bank funding when needed and we can build a financial feasibility model to provide confidence in the development's outcome.

We also develop multi-dwelling projects from community titled terraces home projects to apartment buildings. We have in-house architectural and design skills as well as the building expertise to budget and profitably build out the project. Our team can help market and sell these projects and with our marketing team can put a marketing program where needed to achieve affective results in realistic timeframes.





## 3 more reasons to place your home in the hands of Rossdale Homes.



### Our Absolute industry-leading Fixed Price Guarantee

At Rossdale Homes, we talk a lot about our Fixed Price Contract – but that’s because we believe it’s the most secure contract in the building industry. After you’ve signed there’s:

- ✓ No extra cost for tricky footings
- ✓ No extra cost for energy rating req’s
- ✓ No extra cost for spoil to be removed
- ✓ No extra cost for bushfire req’s
- ✓ No extra cost if rock is encountered on site
- ✓ No extra costs for corrosion zone req’s
- ✓ No extra water / power / sewer costs
- ✓ No extra costs for site difficulties
- ✓ No extra cost for reactive soils
- ✓ No extra cost for high wind speed req’s

We’ve broken earthmovers, star-droppers and our supervisor’s favourite pen – but we’ve never broken a contract. That’s because at Rossdale Homes, our Fixed Price Contracts are different.

Unlike other builders, we won’t offer you our contract until we know everything about your home, your site and your expectations. This way there’ll be no unpleasant builder variations after signing.

The only way our contract price can change is if **you** change something.



### Design flexibility

Like extra room in your walk-in-robe? Ever dreamed of building a cellar for your wine? What about a home theatre?

At Rossdale, we can make your dream plans a reality. We can adapt, resize, remove or add spaces and build you a home that works for your family and your future. Obviously, there are some basic elements we need to discuss first – like location, the orientation of your block and your overall budget and then, we’ll get to work.

Bring in your ideas and those magazine articles and pictures you’ve been collecting. We’ll show you past design concepts and bring those dreams to life. Our designers have won awards for their innovative solutions and building ideas, so tell them what you’re thinking and let them get creative. You’ll be amazed at what’s possible.



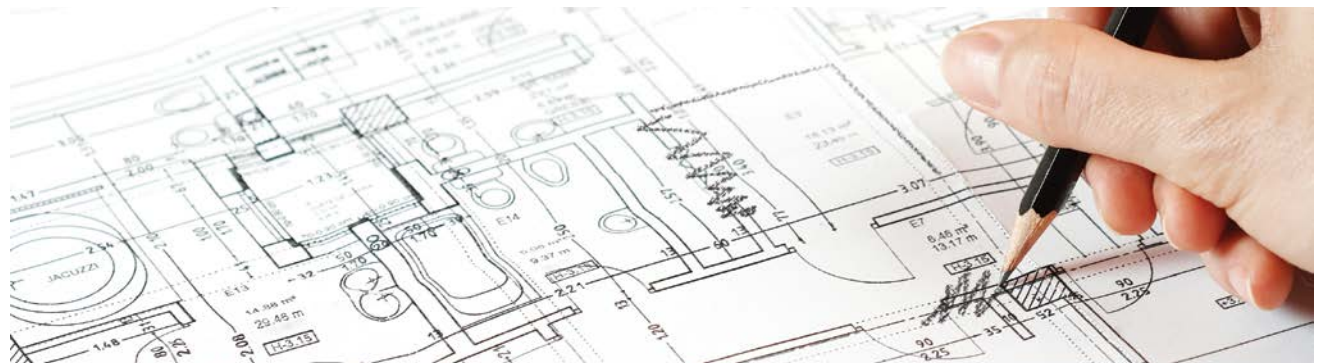
### Experts on difficult sites

Many builders run a mile when they see a steeply sloping block requiring a unique solution.

At Rossdale Homes, we embrace such challenges. Over 35 years, we’ve built award-winning homes on land of every size, shape and slope. From sprawling fields to urban blocks barely four metres wide.

And on those occasions when the limestone is thicker or the access a little tighter, you’ll be glad you’ve signed the most secure Fixed Price Contract of them all. And you’ll be glad you chose Rossdale Homes.

After all, you’re building a Rossdale Home. A home for your today and your tomorrow.



# Building a home. The Rossdale Way.

Opening the door to your brand new Rossdale home is one of those memories that will stay with you forever, as it should. However, getting there isn't always easy.

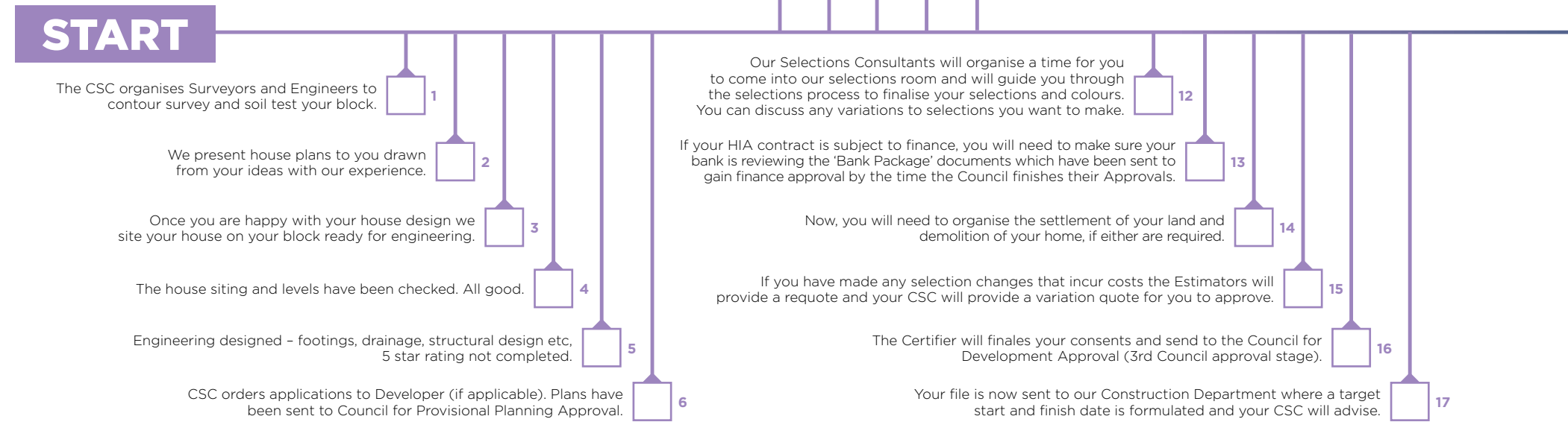
A lot of things need to happen before you get your keys.

So we've bundled them up and put them in to an easy-to-read document which we call the Rossdale Homes Pre-Construction and Build Schedule.

We want your experience of building your Rossdale Home to be enjoyable and rewarding, and hope this schedule helps you on your exciting journey.

After we have listened to what you want, we will present a 'price guide' for a new home for you. You then pay a small fee as part of a Preliminary Service Agreement you sign and the Pre-Construction Process begins...

## The Pre-Construction Process

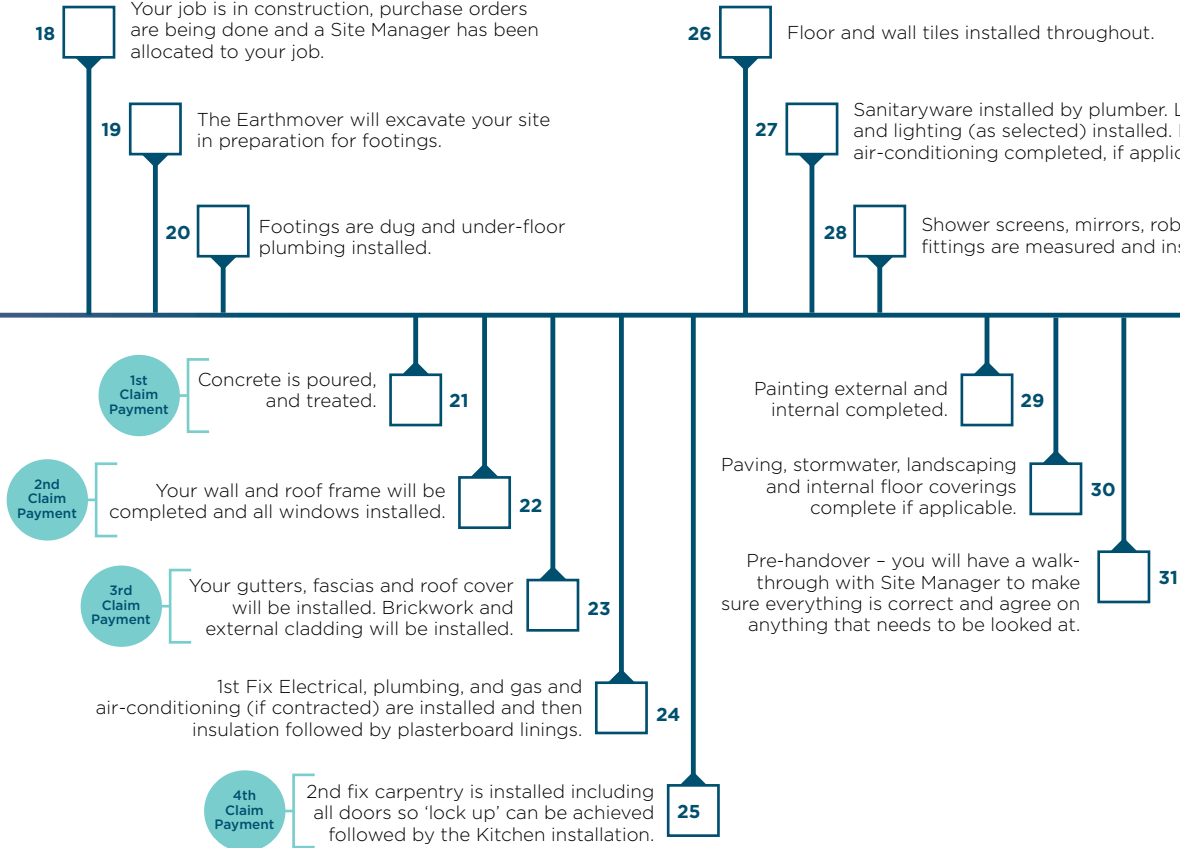




**Getting close now...**  
You're in the home straight.



# The Building Process



## HANDOVER

Site Manager meets you again to ensure the list made at pre-handover is complete and present you the keys to your new home.

# Welcome to the Rossdale Homes' Selection Centre.

**Once you've chosen your plans and signed your building contract with Rossdale Homes, we'll be asking for your thoughts at a very personal level – choosing the finishing touches for your home.**

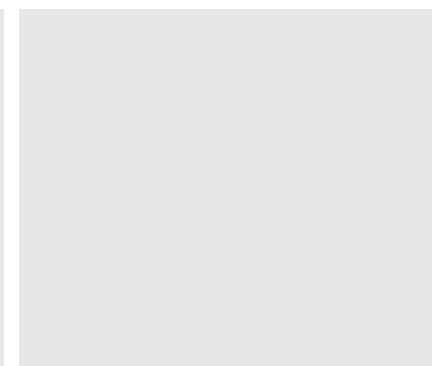
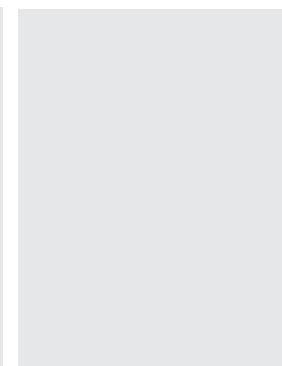
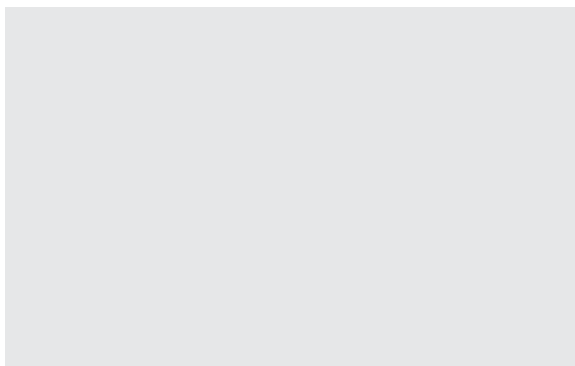
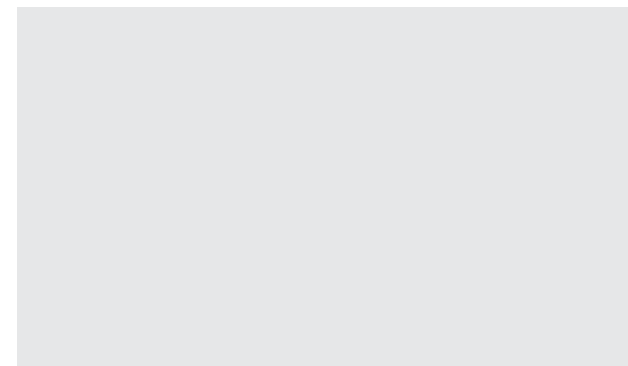
From the type, style and colour of the roofing, to the colour of mortar in the bricks, from the interior and exterior paint to the shower screens, the tiles, the taps, the cupboards, the windows and the doors – we'll help you through a wonderful expression of yourself and your family.

Our qualified colour selection consultant will gently guide you through the process, spending as much time as you need to make your selections. We'll offer you interior design advice and input along the way. We've found that makes the whole process much less stressful. In whichever way we can, we'll make the journey easy and rewarding.

The overall combination of colours, textures and furnishings creates a lasting impression to the eye of the observer – making your home stylish without narrowing its appeal.

Of course, if it's an imaginative new home design you want, it will be a Rossdale home.

- ▶ Remember that style and decoration reflects the image you want to project.
- ▶ Trends can change over time, so avoid over investing in current fads. Keep your home flexible so that it can be upgraded with minimum investment.
- ▶ Put as much thought into your colour scheme and materials as you do in the floorplan. The aesthetics of your home will determine the impression people have and substantially influence its re-sale value.
- ▶ If in doubt, be subtle and understate rather than overstate.
- ▶ Materials and textures will significantly influence the level of maintenance required to keep them looking in top condition, so choose carefully.



## Building smarter homes.

**Building an energy-efficient home means more than installing the right appliances or adding a rainwater tank. At Rossdale Homes, the goal of building energy efficient homes is in our DNA.**

It shapes the design and construction process, from site orientation to solar panels, and works its way into every conversation, whether you're talking to our Building Consultants or one of our Contractors.

Not surprisingly, Rossdale Homes was chosen as the dominant builder for Australia's first 7.5 star energy efficiency new home village – the highly acclaimed Lochiel Park development at Campbelltown. And we apply the same passion and principles to every one of our homes.

### Experts in energy-efficiency – and here's proof

Each of Rossdale Homes' Building Consultants is HIA Greensmart Accredited. Sure, it sounds impressive – but what does it actually mean to you? Well, it means that you're talking to an expert in energy efficiency. Someone passionate about reducing power bills, which is great news for you. If you'd like to talk to one of our consultants, and ask them some questions about how they can save you energy, just call or email us anytime.



- ✓ Energy-efficient lighting
- ✓ Min 5 star rating for all electrical appliances
- ✓ 4 star dual-flush toilets / 3 star shower heads
- ✓ Retractable awning for in-home warmth from winter sun
- ✓ Ceiling fans throughout
- ✓ External shades for greater internal climate control
- ✓ Superior rainwater collection options
- ✓ Higher rated performance insulation options on all surfaces
- ✓ Sustainable timber from local plantations
- ✓ Double Glazing/Performance Glazing options
- ✓ Sustainable, low embodied energy or recycled materials
- ✓ Sarking on roof and external walls
- ✓ Hard-wired load limiting systems
- ✓ Photovoltaic (PV) solar panels for generating electricity
- ✓ Triple bin system in kitchen for recycle/green/general waste
- ✓ Highest 'star rated' sanitary and tapware
- ✓ Gas boosted solar HSW
- ✓ Energy efficient lighting throughout
- ✓ Recycled water system

# Knockdown rebuild. Create magic with Rossdale Homes.

## What are your house plans?

Want to demolish your current home and build new? Subdivide and build two? Add an extension? Downsize? Or develop a street? Whatever your budget or block shape, Rossdale Homes can build the ultimate solution.

**DESIGN**  
Build it your way

**SUB-DIVIDE**  
Build your wealth

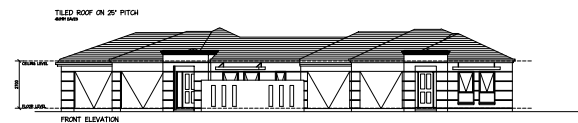
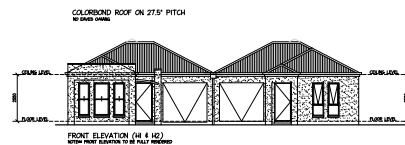
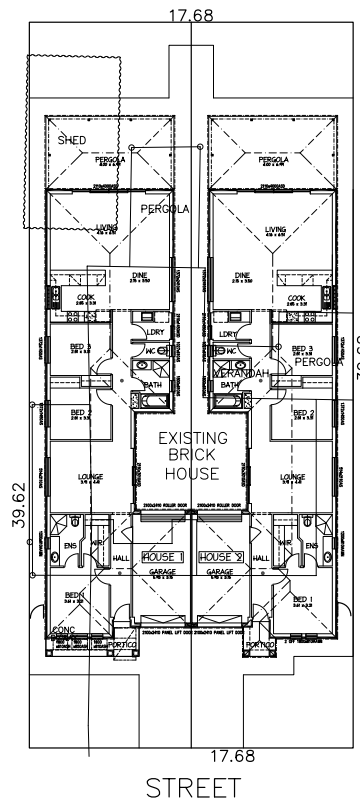
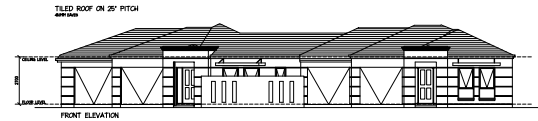
**KNOCKDOWN REBUILD**  
Unlock the potential of your land and build your dream space

## Rossdale Homes is the one-stop shop for your plans

We can handle every stage of your project, from wish list to turnkey.

- |  |   |
|--|---|
| <input checked="" type="checkbox"/> Research             | <input checked="" type="checkbox"/> Home design       |
| <input checked="" type="checkbox"/> Council requirements | <input checked="" type="checkbox"/> Subdivision       |
| <input checked="" type="checkbox"/> Building approvals   | <input checked="" type="checkbox"/> Demolition        |
| <input checked="" type="checkbox"/> Finance options      | <input checked="" type="checkbox"/> Rental management |
| <input checked="" type="checkbox"/> Sale options         |   |

If you'd like to know more, ask a Rossdale Homes Consultant for a copy of our Knockdown Rebuild Booklet or come in for a coffee.







Rossdale  
HOMES

**Display Centre**

Monday and  
Wednesday  
1:30pm-5pm  
Saturday  
and Sunday  
10m-5pm

8433 2000

[www.rossdalehomes.com.au](http://www.rossdalehomes.com.au)

ROSSDALE  
HOMES

ROSSDALE  
HOMES

Build your own future. With Rossdale Investments.



**Rossdale Investments**  
*Because trust is a must*

Get started with only **\$50 a week!**

## Investing in property is smart.

Buying an investment property direct from South Australia's most trusted home builder – that's smarter again.

And there are so many reasons why. Here are just a few:

- ✓ It can cost from as little as **\$50 per week.**
- ✓ A Rossdale Investment property includes a **Lifetime Rental Guarantee.**
- ✓ Buying direct from SA's most trusted builder means no middleman – saving you **big money.**

## Make the ultimate win-win decision.

With Rossdale Investments, there are no catches. No strings attached. Just an opportunity to climb on the property ladder without the risk. And by investing, you'll be on your way to setting up a retirement income that really will change your life – when you want it most.

How much does it cost to get started?  
**Just \$50 a week. That's right.**

**Call us today or go to [www.rossdalehomes.com.au](http://www.rossdalehomes.com.au) to find out more and book in for our FREE investment seminar.**



# Rossdale Homes' unique Sovereign Range.

Sedis el min pliquaspe pori tem quae desti de alit, voluption recumque con consed quamus sitatur atur rem adiorro vel ipsae is dolupta turion ne poria aliqui ium as repe nonem harum hit a dese volorem porunt, volore, sintian imoles sitiis del idescipsunt qui tes exerit re nam cori res aboriae sunt, vent.

Pore el est, odi omnis dignia autem hit aut magnate pos quibus si occulpa doluptae.



## Traditional Homes

<a href="#">The Adelphi</a>	<a href="#">page X</a>
<a href="#">The Allenby</a>	<a href="#">page X</a>
<a href="#">The Angove</a>	<a href="#">page X</a>
<a href="#">The Bonython</a>	<a href="#">page X</a>
<a href="#">The Cheltenham</a>	<a href="#">page X</a>
<a href="#">The Envoy</a>	<a href="#">page X</a>
<a href="#">The Franklin</a>	<a href="#">page X</a>
<a href="#">The Grange</a>	<a href="#">page X</a>



## Courtyard Homes

<a href="#">The Encounter</a>	<a href="#">page X</a>
<a href="#">The Envoy</a>	<a href="#">page X</a>
<a href="#">The Franklin</a>	<a href="#">page X</a>
<a href="#">The Grange</a>	<a href="#">page X</a>
<a href="#">The Franklin</a>	<a href="#">page X</a>
<a href="#">The Grange</a>	<a href="#">page X</a>
<a href="#">The Adelphi</a>	<a href="#">page X</a>



## Cottage and Villa Homes

<a href="#">The Allenby</a>	<a href="#">page X</a>
<a href="#">The Angove</a>	<a href="#">page X</a>
<a href="#">The Bonython</a>	<a href="#">page X</a>
<a href="#">The Cheltenham</a>	<a href="#">page X</a>
<a href="#">The Encounter</a>	<a href="#">page X</a>
<a href="#">The Envoy</a>	<a href="#">page X</a>
<a href="#">The Franklin</a>	<a href="#">page X</a>
<a href="#">The Grange</a>	<a href="#">page X</a>



## Double Storey Homes

<a href="#">The Encounter</a>	<a href="#">page X</a>
<a href="#">The Envoy</a>	<a href="#">page X</a>
<a href="#">The Franklin</a>	<a href="#">page X</a>
<a href="#">The Grange</a>	<a href="#">page X</a>
<a href="#">The Adelphi</a>	<a href="#">page X</a>



## Townhouses

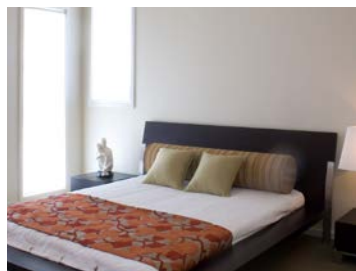
<a href="#">The Adelphi</a>	<a href="#">page X</a>
<a href="#">The Allenby</a>	<a href="#">page X</a>
<a href="#">The Angove</a>	<a href="#">page X</a>
<a href="#">The Bonython</a>	<a href="#">page X</a>
<a href="#">The Cheltenham</a>	<a href="#">page X</a>
<a href="#">The Encounter</a>	<a href="#">page X</a>
<a href="#">The Envoy</a>	<a href="#">page X</a>
<a href="#">The Franklin</a>	<a href="#">page X</a>
<a href="#">The Grange</a>	<a href="#">page X</a>
<a href="#">The Adelphi</a>	<a href="#">page X</a>
<a href="#">The Encounter</a>	<a href="#">page X</a>

Traditional





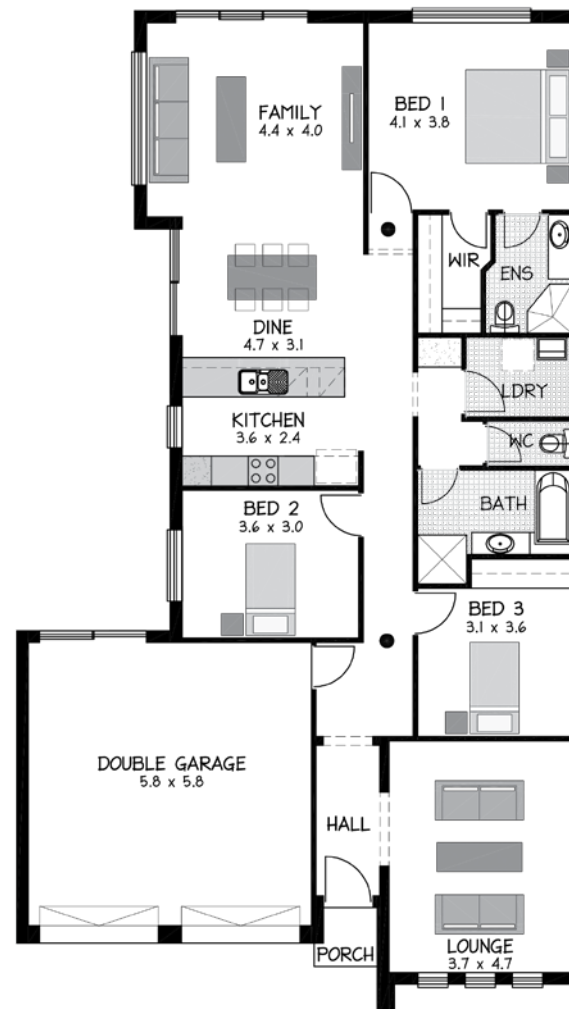
# The Toorak



Sovereign Range

Areas (m <sup>2</sup> )	
Living	152
Garage	37
Porch	1
<b>Total</b>	<b>190</b>
<b>20.62 squares</b>	
11.5m x 20.1m deep	

**4** **2** **2**  
**Bed** **Bth** **Car**



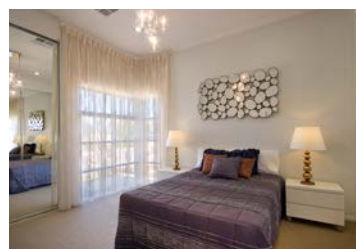


Courtyard



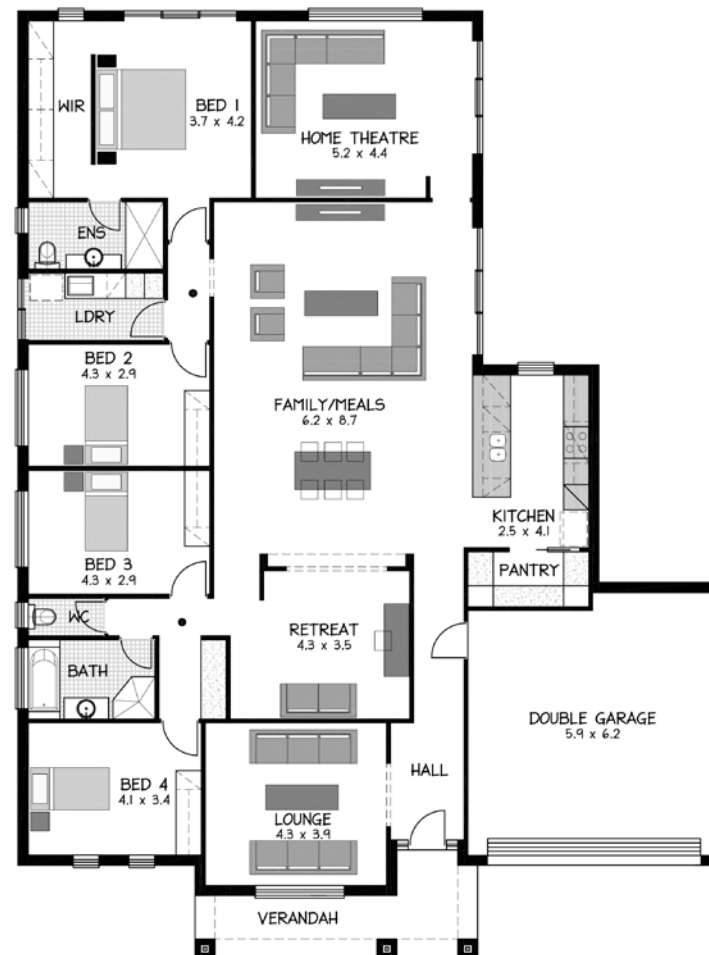


# The Seacombe



Sovereign Range	
<b>Areas (m<sup>2</sup>)</b>	
Living	152
Garage	37
Porch	1
<b>Total</b>	<b>190</b>
	<b>20.62 squares</b>
11.5m x 20.1m deep	

**4** Bed **2** Bth **2** Car





# Cottage & Villa





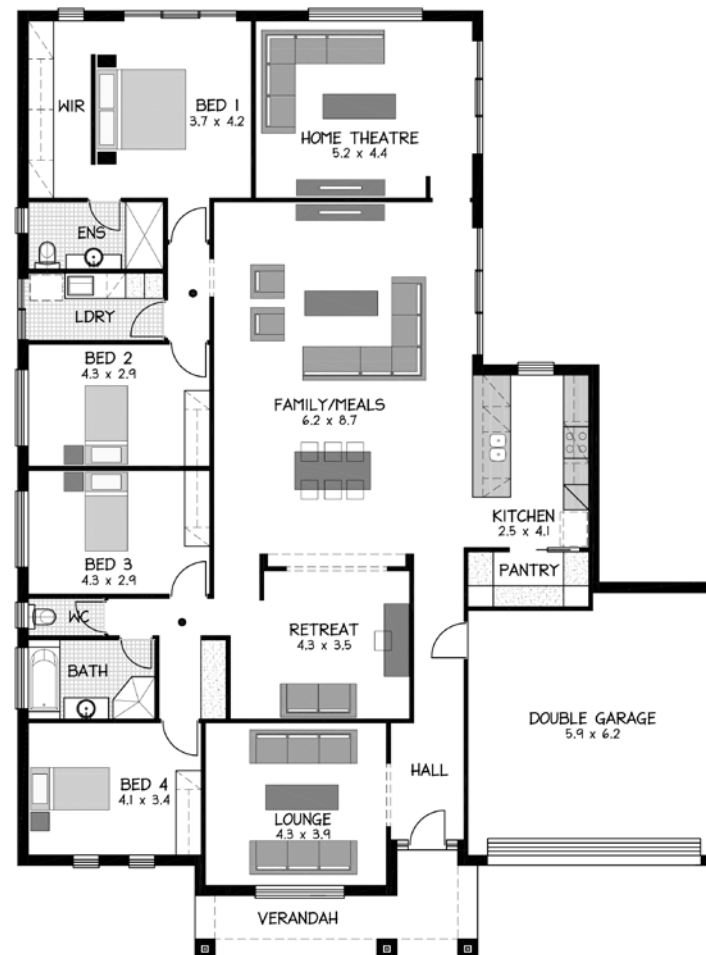


# The Seacombe



Sovereign Range	
<b>Areas (m<sup>2</sup>)</b>	
Living	152
Garage	37
Porch	1
<b>Total</b>	<b>190</b>
	<b>20.62 squares</b>
11.5m x 20.1m deep	

**4** Bed **2** Bth **2** Car



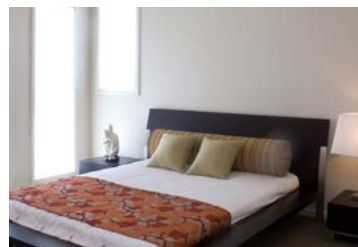
# Double Storey







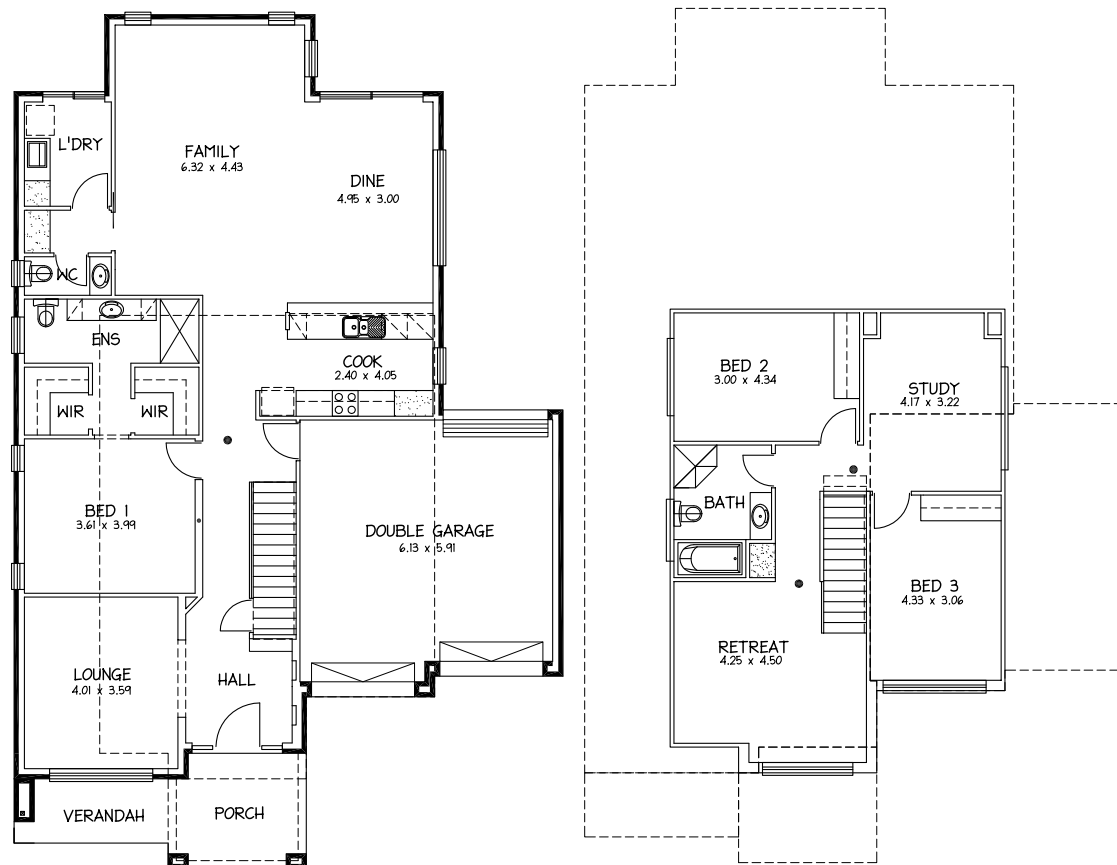
# The Tennyson



**4** Bed **2** Bth **2** Car

**Sovereign Range**

Areas (m <sup>2</sup> )	
Living	152
Garage	37
Porch	1
<b>Total</b>	<b>190</b>
<b>20.62 squares</b>	
11.5m x 20.1m deep	

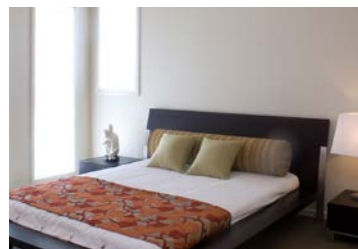


# Townhouse





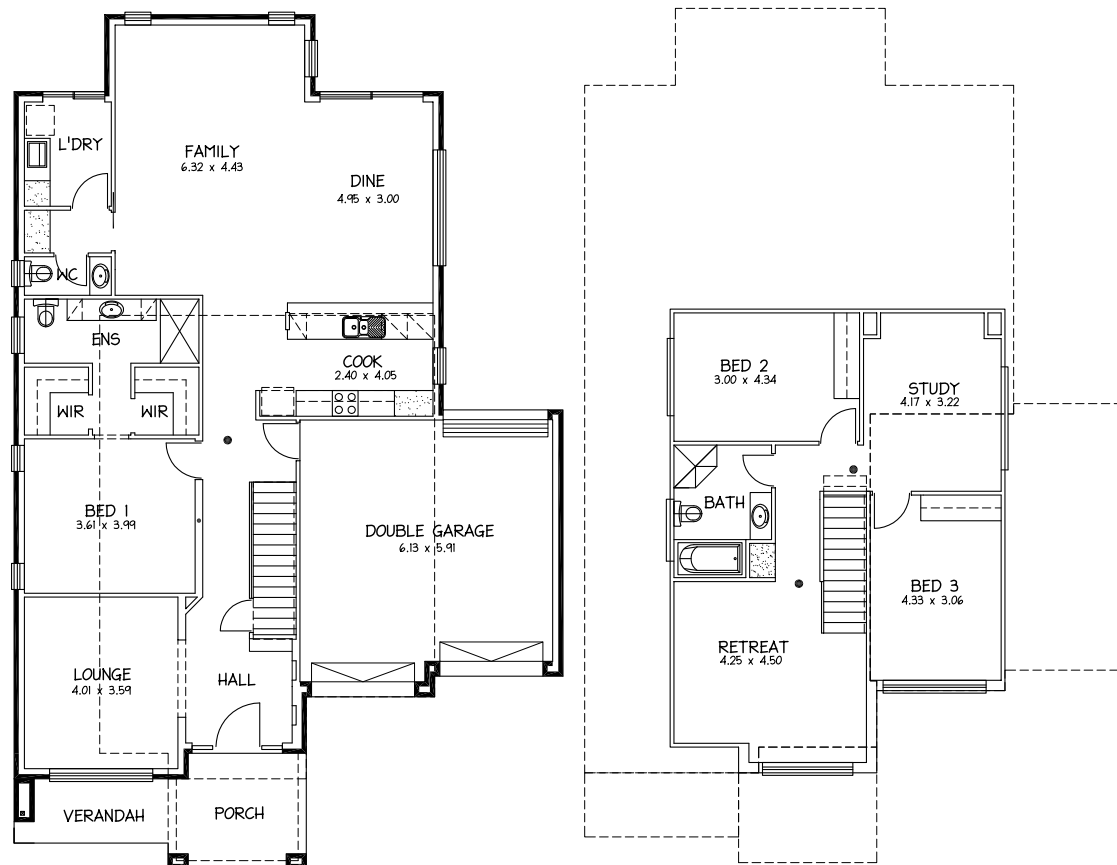
# The Tennyson



**4** Bed **2** Bth **2** Car

**Sovereign Range**

Areas (m <sup>2</sup> )	
Living	152
Garage	37
Porch	1
<b>Total</b>	<b>190</b>
<b>20.62 squares</b>	
11.5m x 20.1m deep	





# The Tennyson



<b>4</b>	<b>2</b>	<b>2</b>
Bed	Bth	Car

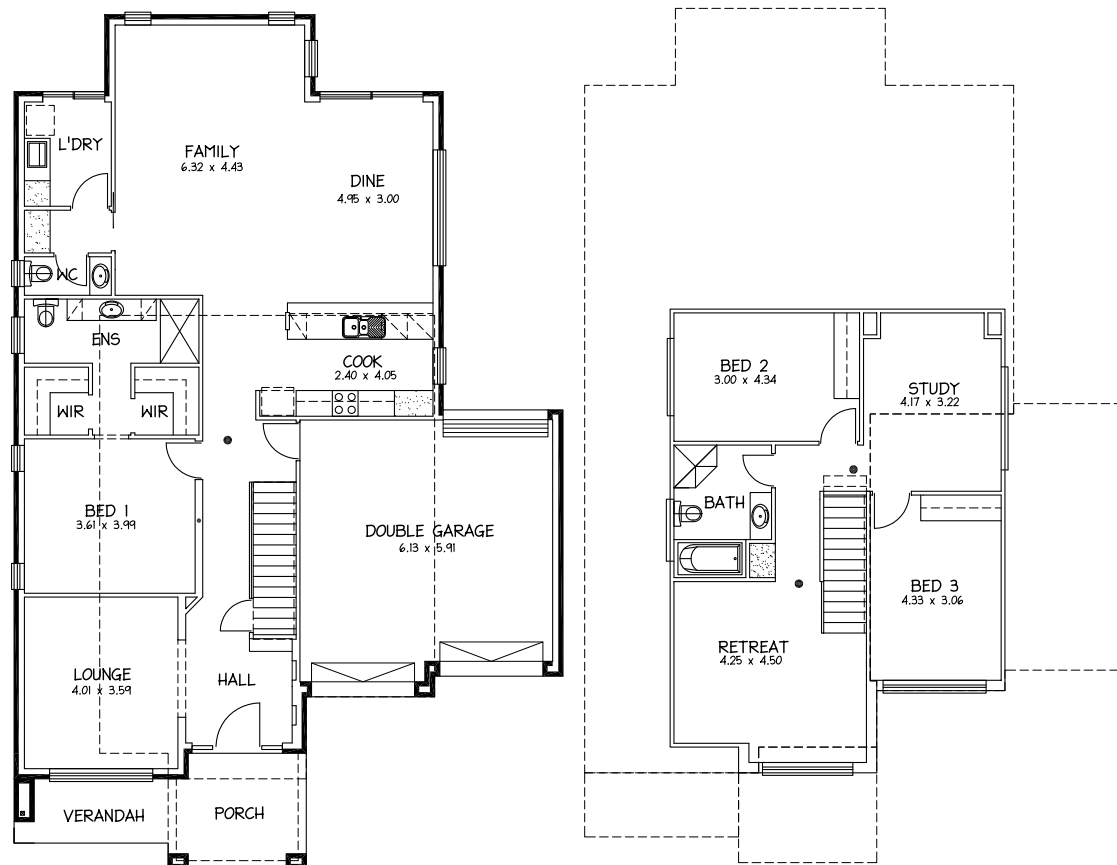
**Sovereign Range**

**Areas (m<sup>2</sup>)**

Living	152
Garage	37
Porch	1
<b>Total</b>	<b>190</b>

**20.62 squares**

11.5m x 20.1m deep





# Rossdale Homes' exclusive Select Range.

Sedis el min pliquaspe pori tem quae desti de alit, voluption recumque con consed quamus sitatur atur rem adiorro vel ipsae is dolupta turion ne poria aliqui ium as repe nonem harum hit a dese volorem porunt, volore, sintian imoles sitiis del idescipsunt qui tes exerit re nam cori res aboriae sunt, vent.

Pore el est, odi omnis dignia autem hit aut magnate pos quibus si occulpa doluptae.



## Traditional Homes

<a href="#">The Adelphi</a>	<a href="#">page X</a>
<a href="#">The Allenby</a>	<a href="#">page X</a>
<a href="#">The Angove</a>	<a href="#">page X</a>
<a href="#">The Bonython</a>	<a href="#">page X</a>
<a href="#">The Cheltenham</a>	<a href="#">page X</a>
<a href="#">The Envoy</a>	<a href="#">page X</a>
<a href="#">The Franklin</a>	<a href="#">page X</a>
<a href="#">The Grange</a>	<a href="#">page X</a>



## Courtyard Homes

<a href="#">The Encounter</a>	<a href="#">page X</a>
<a href="#">The Envoy</a>	<a href="#">page X</a>
<a href="#">The Franklin</a>	<a href="#">page X</a>
<a href="#">The Grange</a>	<a href="#">page X</a>
<a href="#">The Franklin</a>	<a href="#">page X</a>
<a href="#">The Grange</a>	<a href="#">page X</a>
<a href="#">The Adelphi</a>	<a href="#">page X</a>



## Cottage and Villa Homes

<a href="#">The Allenby</a>	<a href="#">page X</a>
<a href="#">The Angove</a>	<a href="#">page X</a>
<a href="#">The Bonython</a>	<a href="#">page X</a>
<a href="#">The Cheltenham</a>	<a href="#">page X</a>
<a href="#">The Encounter</a>	<a href="#">page X</a>
<a href="#">The Envoy</a>	<a href="#">page X</a>
<a href="#">The Franklin</a>	<a href="#">page X</a>
<a href="#">The Grange</a>	<a href="#">page X</a>



## Double Storey Homes

<a href="#">The Encounter</a>	<a href="#">page X</a>
<a href="#">The Envoy</a>	<a href="#">page X</a>
<a href="#">The Franklin</a>	<a href="#">page X</a>
<a href="#">The Grange</a>	<a href="#">page X</a>
<a href="#">The Adelphi</a>	<a href="#">page X</a>



## Townhouses

<a href="#">The Adelphi</a>	<a href="#">page X</a>
<a href="#">The Allenby</a>	<a href="#">page X</a>
<a href="#">The Angove</a>	<a href="#">page X</a>
<a href="#">The Bonython</a>	<a href="#">page X</a>
<a href="#">The Cheltenham</a>	<a href="#">page X</a>
<a href="#">The Encounter</a>	<a href="#">page X</a>
<a href="#">The Envoy</a>	<a href="#">page X</a>
<a href="#">The Franklin</a>	<a href="#">page X</a>
<a href="#">The Grange</a>	<a href="#">page X</a>
<a href="#">The Adelphi</a>	<a href="#">page X</a>
<a href="#">The Encounter</a>	<a href="#">page X</a>



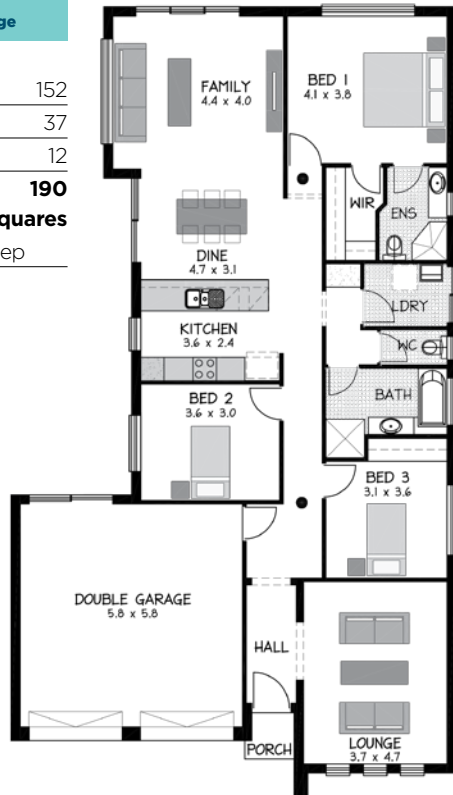
## The Allenby



**4** Bed  
**2** Bth  
**2** Car

Select Range

Areas (m <sup>2</sup> )	
Living	152
Garage	37
Porch	12
<b>Total</b>	<b>190</b>
<b>20.62 squares</b>	
11.5m x 20.1m deep	



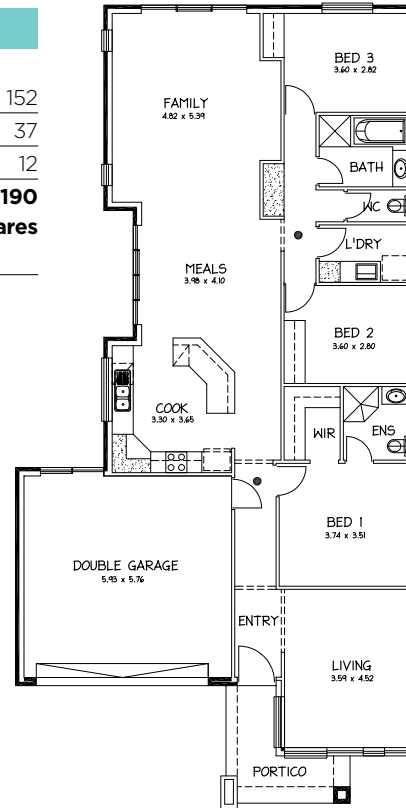
## The Cheltenham



**4** Bed  
**2** Bth  
**2** Car

Select Range

Areas (m <sup>2</sup> )	
Living	152
Garage	37
Porch	12
<b>Total</b>	<b>190</b>
<b>20.62 squares</b>	
11.5m x 20.1m deep	



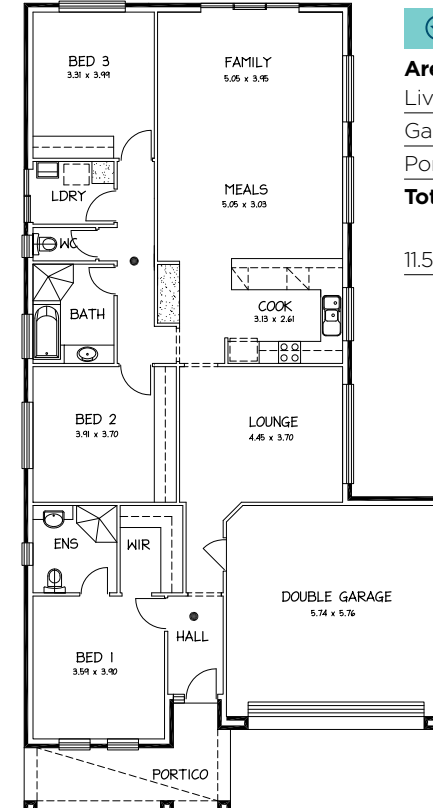
## The Lynton



**4** Bed  
**2** Bth  
**2** Car

Select Range

Areas (m <sup>2</sup> )	
Living	152
Garage	37
Porch	12
<b>Total</b>	<b>190</b>
<b>20.62 squares</b>	
11.5m x 20.1m deep	





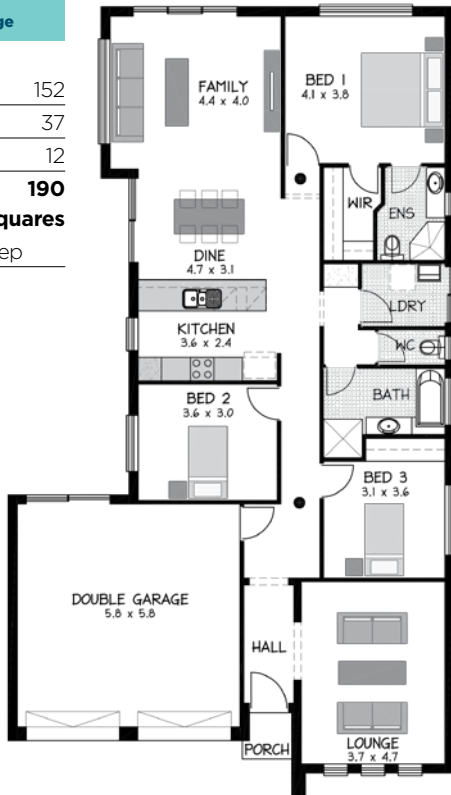
## The Allenby



**4** Bed  
**2** Bth  
**2** Car

Select Range

Areas (m <sup>2</sup> )	
Living	152
Garage	37
Porch	12
<b>Total</b>	<b>190</b>
<b>20.62 squares</b>	
11.5m x 20.1m deep	



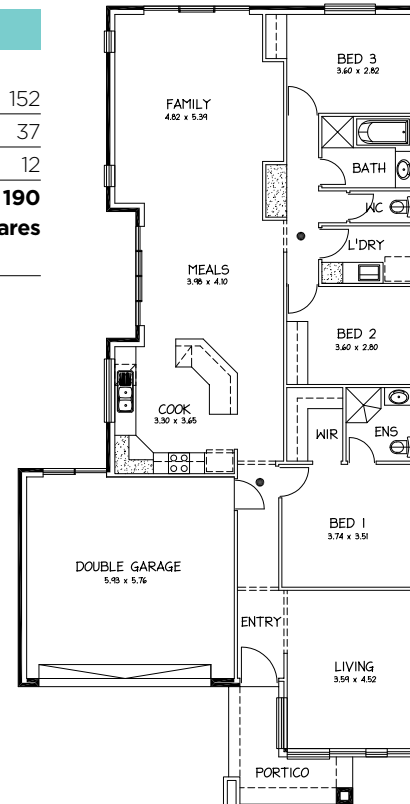
## The Cheltenham



**4** Bed  
**2** Bth  
**2** Car

Select Range

Areas (m <sup>2</sup> )	
Living	152
Garage	37
Porch	12
<b>Total</b>	<b>190</b>
<b>20.62 squares</b>	
11.5m x 20.1m deep	



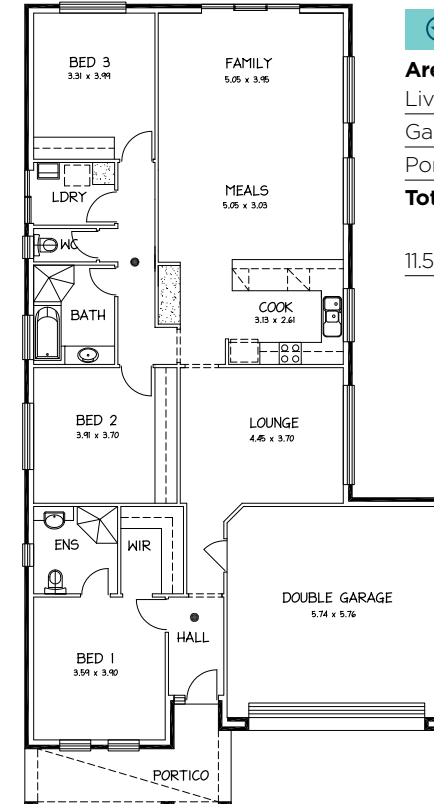
## The Lynton



**4** Bed  
**2** Bth  
**2** Car

Select Range

Areas (m <sup>2</sup> )	
Living	152
Garage	37
Porch	12
<b>Total</b>	<b>190</b>
<b>20.62 squares</b>	
11.5m x 20.1m deep	



# Specifications

Inclusions	Select	Sovereign
<b>General</b>		
We will not ask you to sign a building contract until all pricing has been carried out, including the cost of site preparation, foundations etc. Only then do you have a guarantee of an absolute fixed price.	★	◆
Our absolutely fixed price includes any adverse soil conditions including rock and tree roots and includes removal of spoil from the building work.	★	◆
Soil report, contour plan, full working drawings, engineering costs and council approvals are included.	★	◆
H.I.A. Indemnity Insurance is included on all our homes.	★	◆
Three months maintenance service included	★	◆
Twenty five year structural guarantee included	★	◆
<b>Site</b>		
450mm x 200mm raft footings, 100mm F72 steel reinforced concrete slab designed by qualified structural engineers including single concrete pump allowance.	★	◆
Engineers footing inspection included	★	◆
Wind speed 28m/s requirements included	★	◆
Builders debris cleared from site	★	◆
Service runs of 10 lineal metres for water, power and gas	★	◆
Service runs of 55 lineal metres for sewer	★	◆
<b>Construction</b>		
Gambrels, gables, porticos, porches as per individual designs	★	◆
Verandahs, porticos, porches and alfrescos include concrete slab as per individual designs	★	◆
2400mm ceiling height throughout	★	◆
2400, 2550 or 2700mm ceiling height as per individual designs		◆
Approved Termimesh termite treatment to all slab penetrations with written warranty included	★	◆
Your choice from Rossdale's extensive range of clay bricks (Austral and PGH)	★	◆
Raked joints and grey mortar to brickwork	★	◆
Brick on edge sills	★	◆
R2.0 insulation to external walls of all living areas	★	◆
R4.0 insulation to ceilings of all living areas		◆

Inclusions	Select	Sovereign
<b>Construction</b>		
BHP Colorbond steel roof	★	◆
Ogee profile Colorbond gutters and contour fascias	★	◆
Ogee or half round profile Colorbond gutters and contour fascia as per individual designs		◆
25 degree roof pitch	★	◆
25, 27.5, 30 degree roof pitch or skillion roof per individual designs		◆
Concrete tiles to roof as per individual designs		◆
<b>Fittings</b>		
Your choice of Soler external and internal paint colours	★	◆
67mm single bevel skirtings and architraves with painted finish	★	◆
67mm single bevel or colonial skirtings and architraves with painted finish		◆
55mm plasterboard cove cornice throughout	★	◆
Feature cornice as per individual designs		◆
55mm, 75mm or 90mm plasterboard cove cornice throughout as per individual designs		◆
Sliding door robes (painted finish) including shelf and hanging rail to bedrooms		◆
Shelf and rail to walk-in-robes	★	◆
Shelves and drawers to walk-in-robes as per individual designs		◆
Rheem 27 gas instantaneous hot water service	★	◆
<b>Electrical</b>		
Earth leakage safety switch	★	◆
Direct wired smoke alarms with battery back up	★	◆
Power and light points as per individual designs	★	◆
Exhaust fans to kitchen, bathroom and ensuite	★	◆
Exhaust fans to bathroom and ensuite		◆
TV point x 1	★	◆
TV point x 2		◆
<b>Plumbing</b>		
SA Water pre-laid 20mm water connection fee	★	◆
SA Water pre-laid 100mm sewer connection fee	★	◆
Garden taps to front and rear of home (wall mounted)	★	◆

Inclusions	Select	Sovereign
<b>Doors and Windows</b>		
Bay windows and feature windows as per individual designs		◆
Aluminium windows and sliding doors as per individual designs	★	◆
Vented window locks to all windows (keyed alike where possible).	★	◆
Aluminium flyscreens to all windows (excluding sliding doors) as per individual designs	★	◆
Deadlocks to external hinged doors	★	◆
Cushion doorstops to all hinged doors	★	◆
Front door Humes XC2	★	
Front door Humes XVP11		◆
Internal doors flushpanel (painted finish)	★	
Internal doors Humes Oakfield, Caprice, Pacific, Denmark, Chateau, Vienna, Ascot or Hayman (painted finish).		◆
Gainsborough keyed front entry door hardware from Rossdale range	★	
Gainsborough deadlock to front entry door (keyed to match)	★	
Gainsborough lever Tri-lock to front entry door		◆
Your choice of Gainsborough internal door handles from Rossdale range	★	
Your choice of Gainsborough Lever internal door handles from Rossdale range		◆
Aluminium step tread to front entry door with door seals incorporated within the door frame.	★	◆
<b>Kitchen</b>		
Choice of Rosssdales Silver range of ceramic wall tiles from Beaumont Tiles or Italia Ceramics	★	
Choice of Rosssdales extensive Gold range of wall tiles from Beaumont Tiles or Italia Ceramics		◆
Choice of laminate cupboard finishes with ABS edging from extensive range	★	◆
Metal roller runners to kitchen drawers	★	◆
Dishwasher provision including power point & plumbing	★	◆
Postformed bench tops to all bench tops where possible	★	◆
Stainless steel 1 & 1/2 bowl inset sink with mixer tap	★	
Stainless steel double bowl inset sink, mixer tap, cutting board and drainer		◆
Westinghouse electric fan forced underbench oven and gas hotplates (stainless steel)	★	◆
Laminate overhead cupboards as per individual design		◆
Westinghouse retractable rangehood (ducted to ceiling)		◆

Inclusions	Select	Sovereign
<b>Bathrooms/Ensuites</b>		
Clear safety glass pivot door shower cubicles	★	
Shower cubicles as per individual designs with a clear safety glass pivot door		◆
Mirrors to 1800mm high x full width of vanities	★	◆
Alder Star chrome tapware with directional water saving shower roses	★	
Alder Piatto/Alto mixer tapware with handshowers on rail		◆
Alder Star chrome bathroom accessories (single towel rail per bathroom)	★	
Alder Alto chrome bathroom accessories (double towel rail per bathroom)		◆
Choice of Rosssdales Silver range ceramic wall and floor tiles from Beaumont Tiles or Italia Ceramics	★	
Choice of Rosssdales extensive Gold range of wall and floor tiles from Beaumont Tiles or Italia Ceramics		◆
Skirting tile to bathroom and ensuite (2000mm to shower alcoves)	★	
Minimum 1m wall tiles to bathroom and ensuite, 2m to shower alcoves (excl. separate vanity rooms)		◆
Dual flush toilet suites (white)	★	
Stylus Prima dual flush china toilet suites pan and cistern (white)		◆
3 tap hole china vanity basins	★	
1 tap hole china vanity basins (mixer tapware)		◆
Laminate finish vanity cupboards with ABS edging and postformed tops	★	◆
Chrome waste to bath and chrome floor grate to showers (rubber plug)		◆
<b>Laundry</b>		
45 litre stainless steel trough in metal cabinet	★	
45 litre stainless steel trough in metal cabinet or 45 litre stainless steel inset trough as per individual designs		◆
Automatic washing machine taps	★	◆
Alder Star chrome tapware	★	
Alder Piatto/Alto mixer tapware with 1/4 turn washing machine taps		◆
Linen/broom laminate cupboards with ABS edging as per individual designs	★	◆
Choice of Rosssdales Silver range of ceramic wall and floor tiles from Beaumont Tiles or Italia Ceramics	★	
Choice of Rosssdales extensive Gold range of wall and floor tiles from Beaumont Tiles or Italia Ceramics		◆



## Refer Rossdale Homes and everyone wins!

We believe there are plenty of upsides to having SA's most trusted builder build your home. But here's one more. **Rossdale's Referral Arrangement.**

We're not shy about it either. Many of our customers have built homes with us two, three, four or more times, so we know they're happy. But by referring Rossdale Homes to a friend, we make them even happier – with referral vouchers worth up to \$10,000 in cash\*.

### You don't even need to build with us!

All you need to do is recommend us to a friend who does.

**For each referral, you'll receive \$1,000 cash. And your friend wins, too.**

Because when they build, they will receive \$1,000 worth of goods from their choice of our wonderful suppliers.

To find out more, talk to one of our Building Consultants today or visit [rossdalehomes.com.au](http://rossdalehomes.com.au)

\*Visit [www.rossdalehomes.com.au/referral](http://www.rossdalehomes.com.au/referral) for full terms and conditions.

You could receive **\$1000 cash!**\*



## Take a video tour of the Rossdale Homes range.

Like to walk through one of our homes, without leaving your own home? Then take a video tour.

### First you need the app.

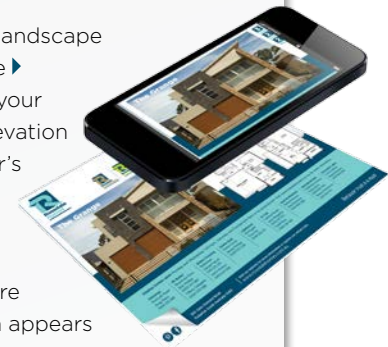
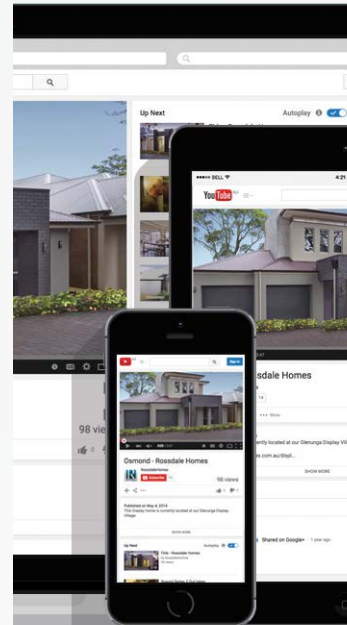
- ✓ Go to the Google Play store or the App store.
- ✓ Download the Aurasma app to your mobile or tablet device
- ✓ Hit the Aurasma logo to load the menus
- ✓ Search for RDH Tours
- ✓ Hit follow.



Each video marked with a V will lead you to a video tour. You can return to the Aurasma view finder by tapping the box icon.

### Watching a video.

- ✓ Hold your phone in landscape mode as shown here ▶
- ✓ Position a photo of your preferred home's elevation inside the viewfinder's marked edges
- ✓ Move your device slowly toward and away from the picture until the play button appears
- ✓ Now just tap the play icon to start your tour!







# The Rossdale Homes complete collection

The Adelphi	page X
The Allenby	page X
The Angove	page X
The Bonython	page X
The Cheltenham	page X
The Envoy	page X
The Franklin	page X
The Grange	page X
The Encounter	page X
The Envoy	page X
The Franklin	page X
The Grange	page X
The Franklin	page X
The Grange	page X
The Adelphi	page X
The Allenby	page X
The Angove	page X
The Bonython	page X
The Cheltenham	page X
The Encounter	page X
The Envoy	page X
The Franklin	page X
The Grange	page X
The Adelphi	page X
The Adelphi	page X
The Allenby	page X
The Angove	page X
The Bonython	page X
The Cheltenham	page X

The Encounter	page X
The Envoy	page X
The Franklin	page X
The Grange	page X
The Adelphi	page X
The Encounter	page X
The Adelphi	page X
The Allenby	page X
The Angove	page X
The Bonython	page X
The Cheltenham	page X
The Envoy	page X
The Franklin	page X
The Grange	page X
The Encounter	page X
The Envoy	page X
The Franklin	page X
The Grange	page X
The Franklin	page X
The Grange	page X
The Adelphi	page X
The Allenby	page X
The Angove	page X
The Bonython	page X
The Cheltenham	page X
The Encounter	page X
The Envoy	page X
The Franklin	page X
The Grange	page X
The Encounter	page X
The Envoy	page X
The Franklin	page X
The Grange	page X
The Encounter	page X
The Envoy	page X
The Franklin	page X
The Grange	page X

The Adelphi	page X
The Adelphi	page X
The Allenby	page X
The Angove	page X
The Bonython	page X
The Cheltenham	page X
The Encounter	page X
The Envoy	page X
The Franklin	page X
The Grange	page X
The Adelphi	page X
The Encounter	page X
The Adelphi	page X
The Allenby	page X
The Angove	page X
The Bonython	page X
The Cheltenham	page X
The Envoy	page X
The Franklin	page X
The Grange	page X
The Encounter	page X
The Envoy	page X
The Franklin	page X
The Grange	page X
The Franklin	page X
The Grange	page X
The Adelphi	page X
The Allenby	page X
The Angove	page X
The Bonython	page X
The Cheltenham	page X
The Envoy	page X
The Franklin	page X







300 Glen Osmond Road  
Fullarton 5063  
South Australia

**Phone** +61 8 8433 2000  
**Fax** +61 8 8433 2099  
**Email** [service@rossdalehomes.com.au](mailto:service@rossdalehomes.com.au)

Visit our website for more information  
or explore our virtual tours.  
[www.rossdalehomes.com.au](http://www.rossdalehomes.com.au)

Ra alia vendipsam, tem rectemperum quae et prore sumque reritaturit lam, nimaos volorum nimusa dolo comnis vendebit doloressima natur, ipsam nempores sitiore hentur, officiet exceat. Dollum inumet eaquam, versped molorae voluptatiis veni doloribusam, te pra nos ea nectaquatqui nistorumquo ipsamendem es preri cone voluptur suntus et harchit autatur ma quo qui rat. Optis doluptas ditaquo magna sum eum a quatiuscidit quo torepraecto volo ommolup tasperovit optatem quam es re iducil es aut quiscid est, non reptatem. Nam quiassu nteturia nimolor alia aut et, volupta turepudaepe autaturit quo cum des. Vol 14 10/15